



Government of India
Ministry of Earth Sciences
India Meteorological Department



Press Release

Date: 08th June, 2025

Time of Issue: 1400 hours IST

Subject: i) Increase in rainfall activity with Isolated heavy falls very likely over south peninsular India, west coast and northeastern states from 10th June and heavy to very heavy rainfall over Karnatak and Kerala from 13th June.

(ii) Heat Wave to severe heat wave Severe conditions are likely to prevail over West Rajasthan during 08th-11th and Heat Wave conditions over remaining areas in Northwest India except Himachal Pradesh, Uttarakhand during next 4 days.

Southwest Monsoon: (Annexure I):

The Northern Limit of Monsoon continues to pass through 17.0°N/55°E, 17.5°N/60°E, 18°N/65°E, 18.5°N/70°E, Mumbai, Ahilyanagar, Adilabad, Bhawanipatna, Puri, Sandhead Island, 23.5°N/89.5°E, Balurghat, 30°N/85°E.

Realised weather during past 24 hours till 0830 hours IST of today, the 08th June, 2025 (Annexure II):

- ❖ **Heavy to very heavy rainfall** has been recorded at isolated places over Konkan & Goa; **Heavy rainfall** recorded at isolated places over Andaman & Nicobar Islands, Tripura, Manipur.
- ❖ **Thunderstorm accompanied with Squally/Gusty winds** with speed 60-80 kmph at isolated places over Konkan & Goa, Marathawada, Madhya Maharashtra; with speed 30-60 kmph at isolated places over Himachal Pradesh, Jammu-Kashmir, Madhya Pradesh, Vidarbha, Gangetic West Bengal, Andaman & Nicobar Islands, Jharkhand, Odisha, Bihar, Manipur, Tamilnadu, Coastal Andhra Pradesh, Rayalaseema, and Telangana.

For more details of realised weather, kindly refer **Annexure II**,

Detailed observations of Maximum Temperature during past 24 hours till 0830 hours IST of today are appended in **Annexure III**.

i. Weather Systems, Forecast and Warnings (refer to Annexure IV & V):

- ❖ An **upper air cyclonic circulation** lay over Haryana & neighbourhood and another over Southeast Himachal Pradesh & adjoining Uttarakhand in lower tropospheric levels.
- ❖ A Western Disturbance lay as a cyclonic circulation over Ladakh & adjoining Kashmir in middle tropospheric levels
- ❖ Another Western Disturbance lay as a trough in middle tropospheric westerlies roughly along Long. 54°E to the north of Lat. 25°N.
- ❖ An **upper air cyclonic circulation** lay over East Bangladesh & neighbourhood in lower tropospheric levels.
- ❖ An **upper air cyclonic circulation** lay over Southeast & adjoining eastcentral Bay of Bengal in middle tropospheric levels.
- ❖ Under the influence of these systems, the following weather is likely:

Northeast India:

- ✓ Light/moderate rainfall at many/some places likely to continue over northeast India during next 7 days with **isolated heavy rainfall** over Arunachal Pradesh, Assam & Meghalaya during 11th-14th and Nagaland, Manipur, Mizoram & Tripura during 10th-13th June.
- ✓ Light/moderate rainfall at some/isolated places accompanied with **thunderstorm, lightning & gusty winds speed reaching 30-40 kmph** over Tripura during 08th-12th June.

South Peninsular India:

- ✓ Light/moderate rainfall at many/some places over Kerala & Mahe, Coastal Karnataka, Lakshadweep during next 7 days.
- ✓ Light/moderate rainfall at some/isolated places accompanied with **thunderstorm, lightning & gusty winds speed reaching 30-40 kmph** over Coastal Andhra Pradesh, Telangana, Rayalaseema, Tamilnadu Puducherry & Karaikal during 08th-12th, Interior Karnataka during 08th-10th June.

- ✓ Isolated **heavy rainfall** likely over Tamilnadu Puducherry & Karaikal, Kerala & Mahe during 10th-14th, Coastal Andhra Pradesh & Yanam, Rayalaseema during 11th-14th, Karnataka during 12th-14th, Lakshadweep on 13th & 14th with **very heavy rainfalls** on Kerala & Mahe, Karnataka on 13th & 14th June.
- ✓ **Thundersquall (wind speed reaching 50-60 kmph gusting to 70 kmph)** very likely at isolated places over Interior Karnataka on 12th June.

East & Central India:

- ✓ Light/moderate rainfall at some places likely to continue over Sub-Himalayan West Bengal & Sikkim during next 7 days.
- ✓ Light/moderate rainfall at isolated/some places accompanied with **thunderstorm, lightning & gusty winds speed reaching 40-50 kmph** likely over Andaman & Nicobar Islands, Odisha during 08th-12th, Madhya Pradesh on 08th & 09th, Chhattisgarh, Gangetic West Bengal on 11th & 12th, Bihar, Jharkhand during 11th-14th June.
- ✓ **Thundersquall (wind speed reaching 50-60 kmph gusting to 70 kmph)** very likely at isolated places over Bihar, Vidarbha on 11th & 12th June.
- ✓ Isolated **heavy rainfall** likely over Andaman & Nicobar Islands on 08th June.

Northwest India:

- ✓ Light/moderate rainfall at some/isolated places accompanied with accompanied with **thunderstorm, lightning & gusty winds speed reaching 40-50 kmph** likely over Uttarakhand & East Uttar Pradesh during 11th-14th; Haryana Chandigarh & Delhi, West Uttar Pradesh on 13th & 14th and over Punjab on 14th June.
- ✓ Isolated **heavy rainfall** likely over Uttarakhand during 12th-14th June.
- ✓ Dust raising winds (speed 30-40 kmph) very likely over West Rajasthan during 08th-11th; Punjab, Haryana, West Uttar Pradesh during 08th-10th June.

West India:

- ✓ Light/moderate rainfall at some/isolated places accompanied with accompanied with **thunderstorm & lightning** likely over Konkan & Goa on 08th, 09th, 13th & 14th; Madhya Maharashtra & Marathawada during 08th-14th June.
- ✓ Isolated **heavy rainfall** likely over Konkan & Goa during 12th-14th, Madhya Maharashtra on 13th & 14th, Marathawada on 14th June.

Maximum Temperature Forecast:

- ❖ Maximum Temperatures likely to rise by 2-3°C over Northwest & Central India during next 3 days and no significant change thereafter.
- ❖ No significant change in maximum temperatures likely over rest parts of the country.

Heat wave and Hot & Humid warnings:

- ❖ **Heat wave condition** very likely at many/some places over West Rajasthan during 08th-11th with **severe heat wave conditions** at isolated/some parts on 09th June.
- ❖ **Heat wave conditions** are likely to prevail over Jammu-Kashmir-Ladakh-Gilgit-Baltistan-Muzaffarabad during 08th-10th, Punjab, Haryana, Chandigarh & Delhi during 08th-11th; south West Uttar Pradesh during 09th-11th, East Uttar Pradesh, East Rajasthan on 09th & 10th, north Madhya Pradesh on 10th & 11th June.
- ❖ **Hot & humid weather** is likely to prevail over Coastal Andhra Pradesh & Yanam on 08th; Gangetic West Bengal, Odisha, Tamilnadu Puducherry & Karaikal on 08th & 09th, Bihar on 09th & 10th
- ❖ **Warm Night conditions** are likely at isolated places over Punjab, Haryana Chandigarh & Delhi on 09th & 10th June.

FISHERMEN WARNINGS:

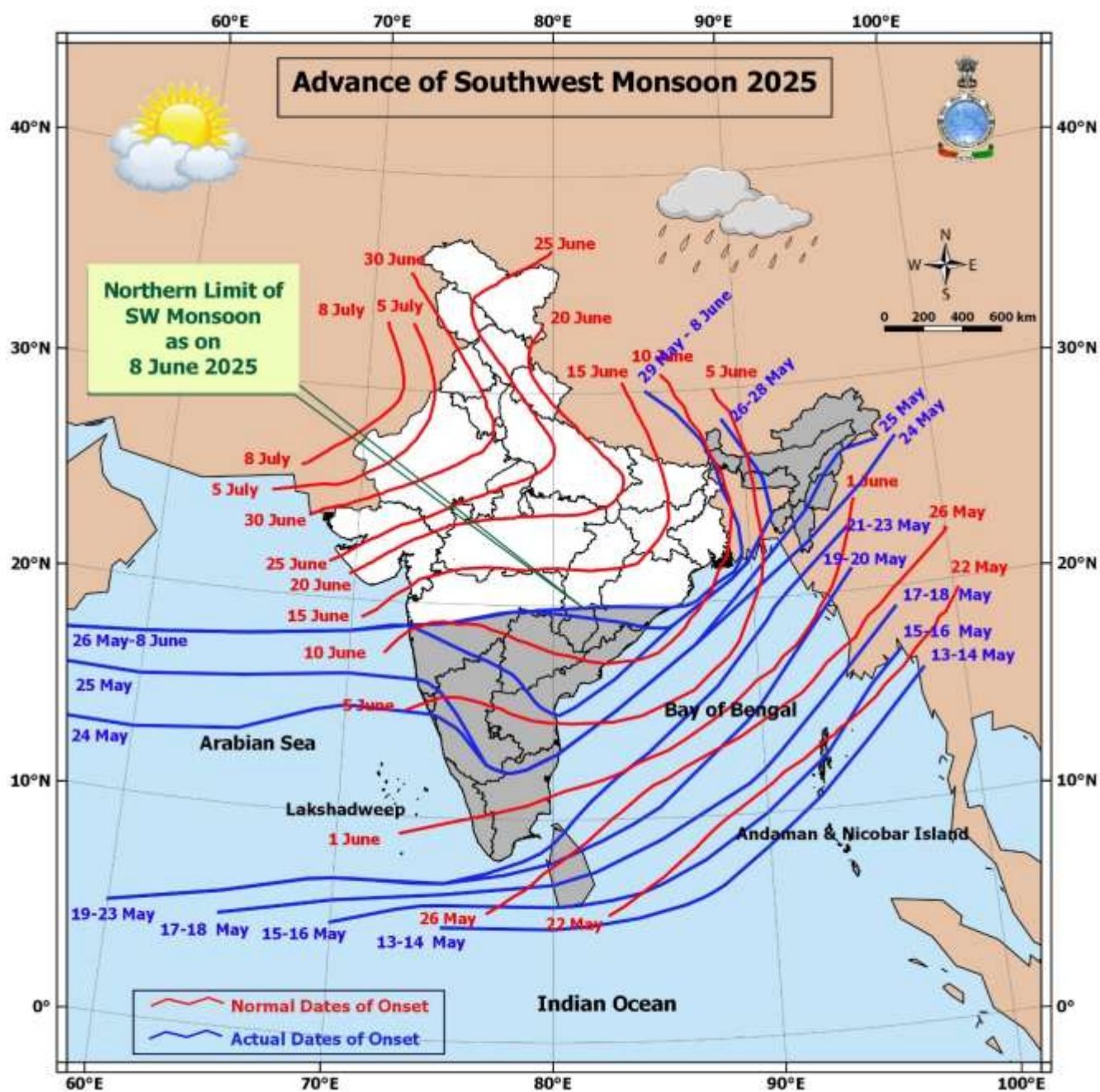
- ❖ Fishermen are advised not to venture along and off the Somalia coast and adjoining sea areas during 08th-12th June.
 - ❖ Fishermen are advised not to venture over many parts of south Bay of Bengal during 09th to 12th June, along and off Tamil Nadu coast on 10th -12th June.
 - ❖ Fishermen are advised not to venture over the Gulf of Mannar adjoining Comorin area during 08th-12th June.
 - ❖ Fishermen are advised not to venture over Andaman Sea from during 08th-12th June.
- Total suspension of fishing operations is suggested over above mentioned areas and dates.

ii. Weather conditions and forecast over Delhi/NCR during 08th June to 11th June, 2025 (Annexure VI)

For more details, kindly refer National Weather Bulletin:

https://mausam.imd.gov.in/responsive/all_india_forecast_bulletin.php

For District wise warnings refer: <https://mausam.imd.gov.in/responsive/districtWiseWarningGIS.php>



Significant weather reported during past 24 hours till 0830 hours IST of today:**Rainfall recorded (in cm) reported during past 24 hours till 0830 hours IST of today:**

- ❖ **Konkan & Goa:** Uran (dist Raigad) 16; Mandangad (dist Ratnagiri) 9;
- ❖ **Nagaland, Manipur, Mizoram & Tripura:** Dharmanagar/panisagar (dist North Tripura) 10; Jiribam AWS (dist Imphal East) 8;
- ❖ **Andaman & Nicobar Islands:** Car Nicobar (dist Nicobar) 7.

Realised Gusty Winds (KMPH) During Past 24hours ending at 0830 hrs IST of Today i.e. 08.06.2025:

- ❖ **Marathawada:** Parbhani (Parbhani_AMFU) - 68 Kmph, Jalgaon - 56 Kmph, Chhatrapati Sambhaji Nagar - 50 Kmph;
- ❖ **Madhya Maharashtra:** Dhule - 65 Kmph, Pune (Christ University Lavasa) - 44 Kmph, Pune (Narayangao Krishi Kendra) - 43 Kmph;
- ❖ **Saurashtra & Kutch:** Dhari Aws (Dist Amreli) 48 Kmph;
- ❖ **Gujarat Region:** Dholera Aws (Dist Ahmedabad) 43 Kmph;
- ❖ **Jammu-Kashmir:** Baramulla=48 ,Kup=37,Poonch 31;
- ❖ **West Madhya Pradesh:** Bhopal 46;
- ❖ **Assam & Meghalaya:** Jorhat=39kmph, Karbianglong=37kmph;
- ❖ **Himachal Pradesh:** Kukumseri-39, Tabo-37;
- ❖ **Andaman & Nicobar Islands:** Sri Vijaypuram (40 Km/H);
- ❖ **Gangetic West Bengal:** Barrackpore_Aws400 (44.45 Km/H);
- ❖ **East Madhya Pradesh:** Narsinghpur 39;
- ❖ **Konkan & Goa:** Raigad (Iig_Alilibag) - 39 Kmph, Mumbai (Colaba) - 39 Kmph;
- ❖ **Vidarbha:** Pusad 35;
- ❖ **Odisha:** Kalahandi_Bhavanipatna_Kvk (33.34 Km/H), Hatia (31.48 Km/H);
- ❖ **Jharkhand:** Jagannathpur-Bau_Kvk (31.48 Km/H), Kvmeghahatuburu (27.78 Km/H);
- ❖ **Bihar:** Supaul_Kvk (37.06 Km/H), Vaishali_Kvk (33.34 Km/H), Darbhanga (33.34 Km/H), Begusarai (33.34 Km/H), Biharsharif (31.48 Km/H);
- ❖ **Himachal Pradesh:** Kukumseri-39, Tabo-37;

Temperature observations during past 24 hours till 0830 hours IST of today:

- ❖ Yesterday, Maximum Temperatures were in the range of **39-43°C** in many parts of Plains of Madhya Pradesh; in some parts of Rajasthan, Haryana-Chandigarh-Delhi, Punjab, East Uttar Pradesh, Vidarbha, Telangana; in isolated parts of Chhattisgarh, Odisha, Coastal Andhra Pradesh & Yanam; in the range **35-39°C** in some/many parts of Bihar, Gangetic West Bengal, Rayalaseema, Tamil Nadu, Puducherry & Karaikal, Saurashtra & Kutch, West Uttar Pradesh, Marathwada, Jharkhand and they were less than **34°C** elsewhere over remaining parts of the country. Yesterday, the **highest maximum temperature** of **45.3°C** was reported at **Jaisalmer (West Rajasthan)**.
- ❖ Yesterday, Maximum Temperature were **markedly above normal (> 5.1°C)** at isolated places over West Uttar Pradesh, Himachal Pradesh and Jammu-Kashmir/Ladakh-Gilgit-Baltistan-Muzaffarabad. **appreciably above normal (3.1°C to 5.0°C)** at most places over Arunachal Pradesh; at few places over Assam & Meghalaya; at isolated places over Sub Himalayan West Bengal & Sikkim, East Uttar Pradesh, West Rajasthan, East Madhya Pradesh, Saurashtra & Kutch, Tamil Nadu, Puducherry & Karaikal and Kerala & Mahe. **above normal (1.6°C to 3.0°C)** at many places over Nagaland, Manipur, Mizoram & Tripura, Bihar and Lakshadweep; at few places over Coastal Andhra Pradesh & Yanam and Coastal Karnataka; at isolated places over Gangetic West Bengal, Odisha, Haryana-Chandigarh-Delhi, West Madhya Pradesh, Telangana and Rayalaseema. **near normal (-1.5°C to 1.5°C)** at many places over Konkan & Goa, Vidarbha, North Interior Karnataka and South Interior Karnataka; at most places over Jharkhand, Uttarakhand, Punjab, East Rajasthan, Gujarat Region and Chhattisgarh; at few places over Andaman & Nicobar Islands and Marathwada; at isolated places over Madhya Maharashtra.

Fig.1: Maximum Temperatures

Fig.2: Departure of Maximum Temperatures

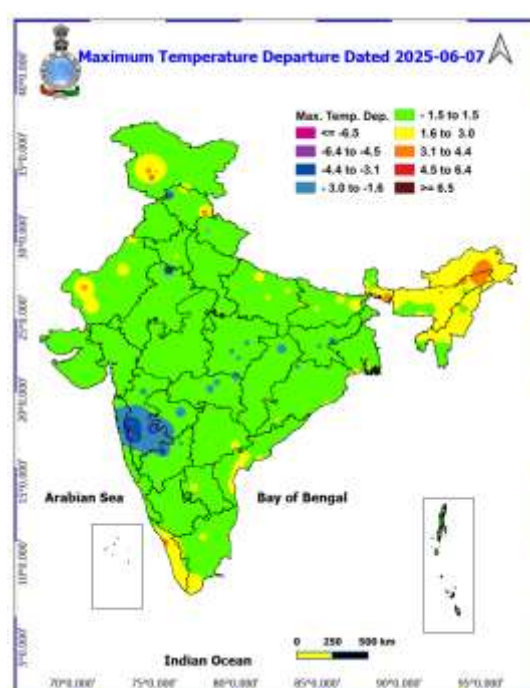
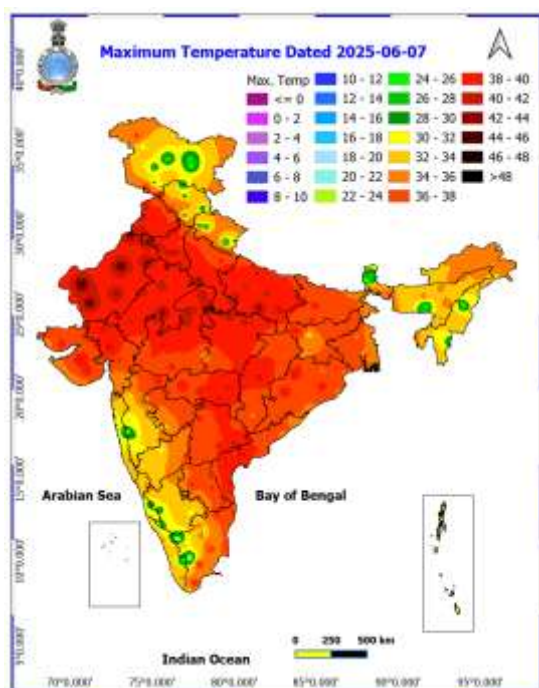
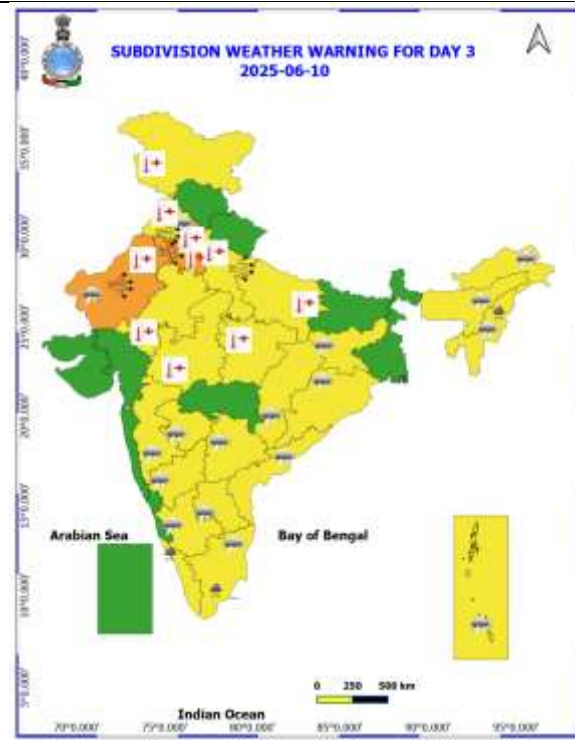
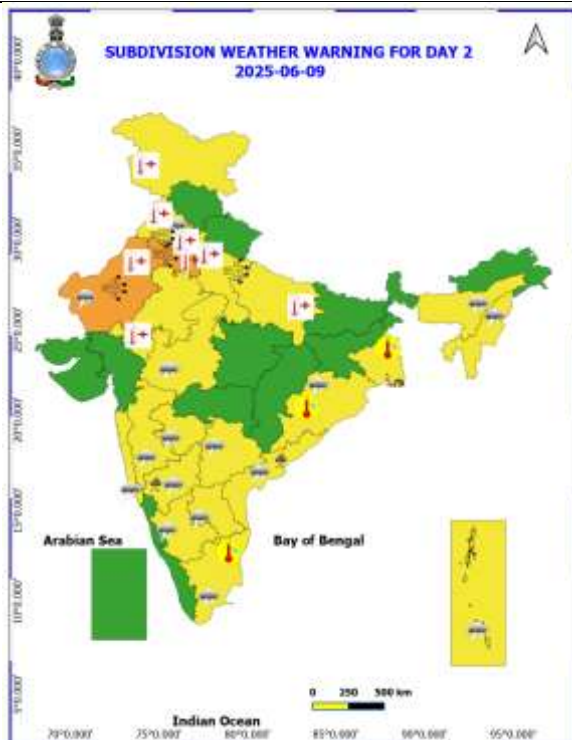
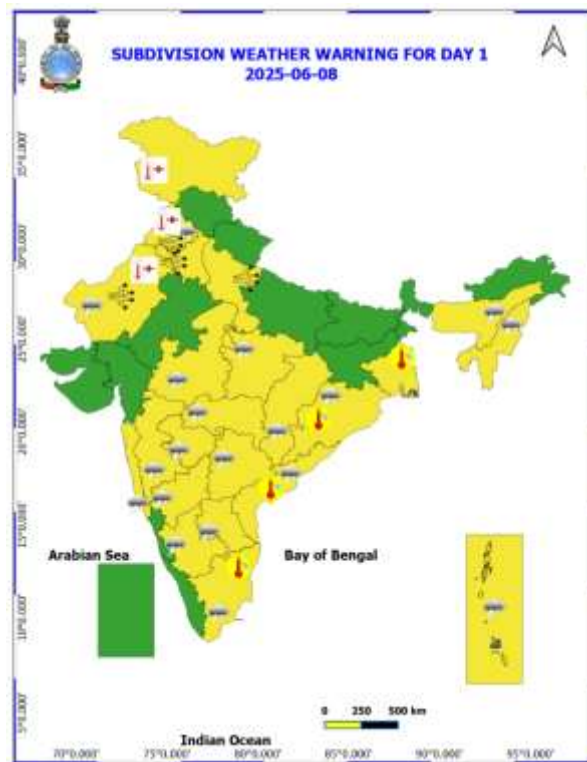
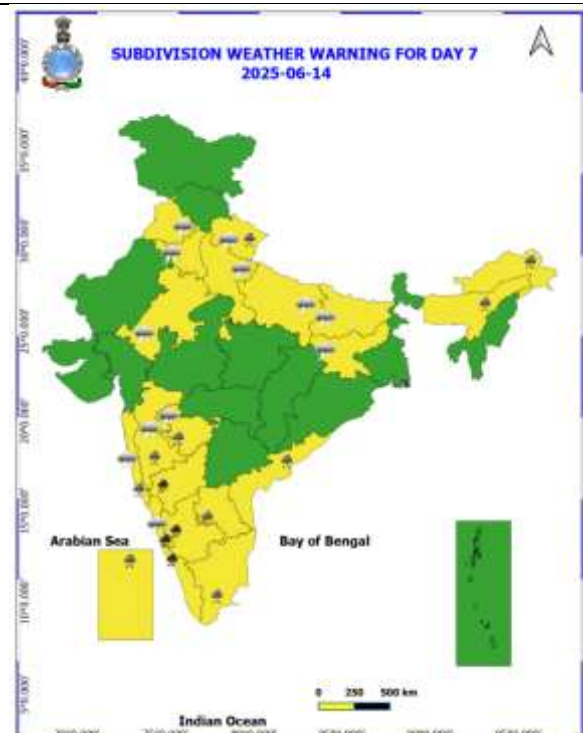
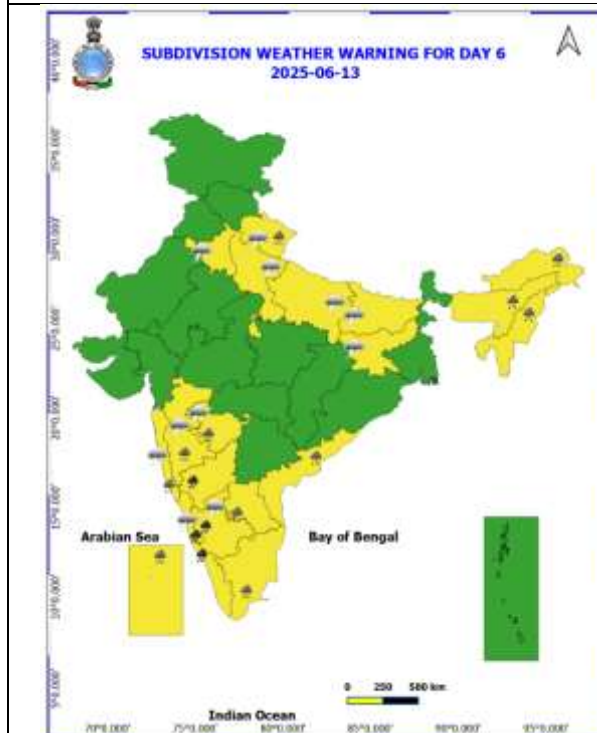
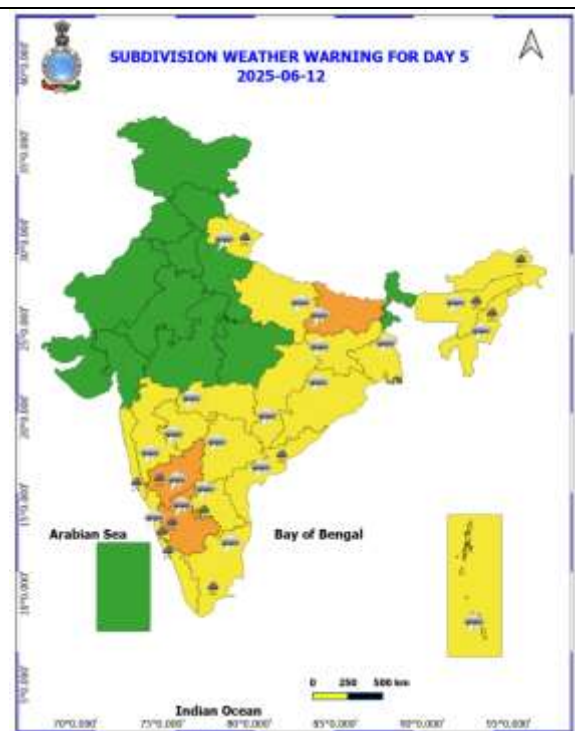
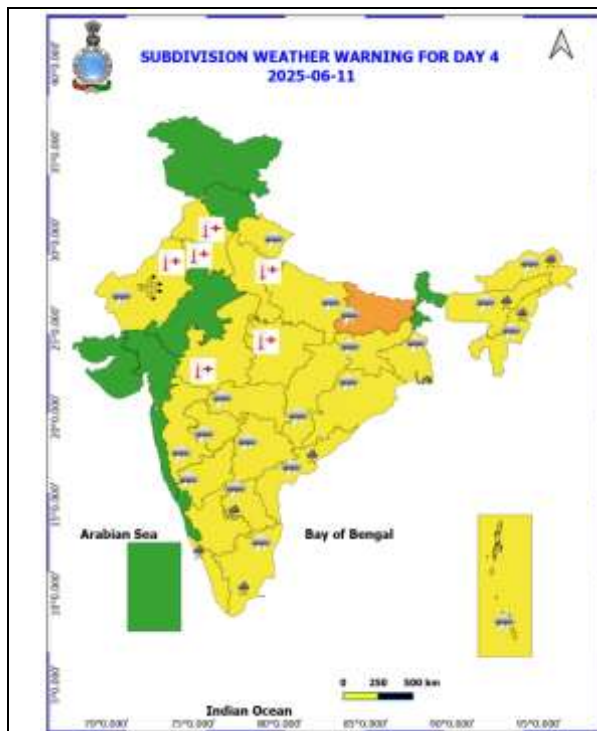


Table-1								
7 Days Rainfall Forecast								
S.No.	Subdivision	8- Jun	9- Jun	10- Jun	11- Jun	12- Jun	13- Jun	14- Jun
		Day 1	Day 2	Day 3	Day 4	Day 5	Day 6	Day 7
1	ANDAMAN & NICOBAR ISLANDS	WFS	WFS	WFS	WFS	WFS	FWS	FWS
2	ARUNACHAL PRADESH	SCT	SCT	SCT	FWS	FWS	FWS	FWS
3	ASSAM & MEHGHALAYA	ISOL	SCT	SCT	FWS	FWS	WFS	WFS
4	NAGALAND, MANIPUR, MIZORAM AND TRIPURA	SCT	FWS	FWS	FWS	FWS	FWS	FWS
5	SUB HIMALAYAN WEST BENGAL & SIKKIM	ISOL	ISOL	ISOL	SCT	SCT	SCT	FWS
6	GANGETIC WEST BENGAL	ISOL	ISOL	ISOL	SCT	FWS	FWS	FWS
7	ODISHA	ISOL	ISOL	SCT	SCT	SCT	SCT	SCT
8	JHARKHAND	ISOL	ISOL	SCT	SCT	SCT	SCT	FWS
9	BIHAR	ISOL	ISOL	ISOL	SCT	FWS	SCT	SCT
10	EAST UTTAR PRADESH	DRY	DRY	DRY	SCT	ISOL	ISOL	SCT
11	WEST UTTAR PRADESH	DRY	DRY	DRY	DRY	ISOL	ISOL	ISOL
12	UTTARAKHAND	DRY	DRY	DRY	SCT	FWS	FWS	FWS
13	HARYANA, CHANDIGARH & DELHI	DRY	DRY	DRY	DRY	DRY	ISOL	ISOL
14	PUNJAB	DRY	DRY	DRY	DRY	DRY	ISOL	ISOL
15	HIMACHAL PRADESH	DRY	DRY	DRY	DRY	DRY	ISOL	ISOL
16	JAMMU AND KASHMIR AND LADAKH	DRY	DRY	DRY	DRY	DRY	ISOL	ISOL
17	WEST RAJASTHAN	DRY	DRY	DRY	DRY	DRY	DRY	DRY
18	EAST RAJASTHAN	ISOL	DRY	DRY	DRY	DRY	DRY	ISOL
19	WEST MADHYA PRADESH	ISOL	ISOL	ISOL	ISOL	ISOL	ISOL	ISOL
20	EAST MADHYA PRADESH	ISOL	ISOL	ISOL	ISOL	ISOL	ISOL	ISOL
21	GUJRAT REGION	ISOL	ISOL	ISOL	ISOL	ISOL	ISOL	ISOL
22	SAURASHTRA & KUTCH	ISOL	ISOL	ISOL	ISOL	ISOL	ISOL	ISOL
23	KONKAN & GOA	SCT	SCT	ISOL	ISOL	SCT	FWS	WFS
24	MADHYA MAHARASHTRA	ISOL	ISOL	ISOL	ISOL	ISOL	SCT	SCT
25	MARATHWADA	ISOL	ISOL	ISOL	ISOL	ISOL	SCT	FWS
26	VIDARBHA	ISOL	ISOL	ISOL	ISOL	SCT	SCT	ISOL
27	CHHATTISGARH	ISOL	ISOL	ISOL	ISOL	SCT	SCT	SCT
28	COASTAL ANDHRA PRADESH	ISOL	ISOL	SCT	SCT	FWS	SCT	SCT
29	TELANGANA	SCT	SCT	SCT	SCT	SCT	SCT	SCT
30	RAYALASEEMA	ISOL	SCT	SCT	FWS	FWS	FWS	FWS
31	TAMILNADU & PUDUCHERRY	SCT	SCT	SCT	SCT	SCT	ISOL	ISOL
32	COSTAL KARNATAKA	SCT	FWS	FWS	WFS	WFS	WFS	WFS
33	NORTH INTERIOR KARNATAKA	SCT	FWS	FWS	FWS	WFS	WFS	WFS
34	SOUTH INTERIOR KARNATAKA	SCT	FWS	FWS	FWS	WFS	WFS	WFS
35	KERALA AND MAHE	SCT	FWS	WFS	WFS	WFS	WFS	WFS
36	LAKSHADWEEP	SCT	SCT	FWS	WFS	WFS	WFS	WFS

- As the lead period increases forecast accuracy decreases.





- Action may be taken based on ORANGE AND REDCOLOUR warnings.
- Vulnerable regions likely urban and hilly areas action may be initiated for heavy rainfall warning.
- As the lead period increases forecast accuracy decreases.

Detailed districtwise Multi Hazard weather warning for next five days available at
<https://mausam.imd.gov.in/responsive/districtWiseWarningGIS.php>

Weather forecast over Delhi/NCR during 08th to 11th June 2025**Past Weather:**

There has been a rise in the minimum temperature upto 1°C and rise in the maximum temperature upto 1°C over Delhi/NCR during the past 24 hours. The maximum and minimum temperatures over Delhi were around 40 to 41°C and 26 to 28° respectively. The minimum temperature was near normal and the maximum temperature was near normal. Mainly clear sky conditions with predominant surface wind from the southwest/southeast direction with wind speeds up to 10 kmph prevailed during the past 24 hours. Mainly clear sky conditions with wind speed less than 10 kmph from the southwest direction prevailed over the region in the forenoon today.

Weather Forecast:

08.06.2025: Mainly clear sky. Hot and humid weather condition. The maximum temperatures over Delhi are likely to be in the range of 41 to 43°C. The maximum temperature will be above normal up to 1 - 3°C. The predominant surface wind will likely be from the southeast direction with a wind speed of less than 15 kmph in the afternoon. The wind speed will gradually increase becoming 15-20 kmph from the northwest direction during evening and night.

09.06.2025: Mainly clear sky. Hot and humid weather condition with dust rising surface winds 20 – 30 kmph. The maximum and minimum temperatures over Delhi are likely to be in the range of 41 to 43°C and 27 to 29°C respectively. The minimum temperature will be above normal up to 1 - 2°C and the maximum temperature will be above normal up to 2 - 4°C. The predominant surface wind will likely be from the northwest direction with a wind speed of less than 16 kmph during the morning hours. The wind speed will gradually increase becoming 18-20 kmph from the northwest direction in the afternoon. It will increase becoming less than 25 kmph from the northwest direction during evening and night.

10.06.2025: Mainly clear sky. Hot and humid weather condition with dust rising surface winds 20 – 30 kmph. The maximum and minimum temperatures over Delhi are likely to be in the range of 42 to 44°C and 27 to 29°C respectively. The minimum temperature will be above normal up to 1 - 2°C and the maximum temperature will be above normal up to 2 - 4°C. The predominant surface wind will likely be from the northwest direction with a wind speed of less than 25 kmph during the morning hours. The wind speed will gradually decrease becoming less than 20 kmph from the northwest direction in the afternoon. It will increase to less than 25 kmph from the northwest direction during the evening and night.

11.06.2025: Mainly clear sky. Hot and humid weather condition with dust rising surface winds 20 – 30 kmph. The maximum and minimum temperatures over Delhi are likely to be in the range of 42 to 44°C and 28 to 30°C respectively. The minimum temperature will be above normal up to 1 - 3°C and the maximum temperature will be above normal up to 2 - 4°C. The predominant surface wind will likely be from the northwest direction with a wind speed of less than 15 kmph during the morning hours. The wind speed will gradually increase becoming less than 20 kmph from the northwest direction in the afternoon. It will decrease to less than 15 kmph from the northwest direction during the evening and night.

Impact expected and Action Suggested:

- Be cautious and take precautionary measures though there is no likelihood of heat wave conditions. There is likelihood of heat related impact to vulnerable population as the temperatures are likely to be above normal.
- Moderate health concern for vulnerable people e.g. infants, elderly people with chronic diseases.
- Avoid heat exposure, wear light weight, light colored, loose, cotton clothes, cover your head, use a cloth, hat or umbrella.

Impact & Action Suggested due to very heavy rainfall over Kerala & Mahe, Karnataka on 13th & 14th June.

Impact Expected

- ❖ Localized Flooding of roads, water logging in low lying areas and closure of underpasses mainly in urban areas of the above region.
- ❖ Occasional reduction in visibility due to heavy rainfall.
- ❖ Disruption of traffic in major cities due to water logging in roads leading to increased travel time.
- ❖ Minor damage to kutcha roads.
- ❖ Possibilities of damage to vulnerable structure.
- ❖ Localized Landslides/Mudslides
- ❖ Damage to horticulture and standing crops in some areas due to inundation.
- ❖ It may lead to riverine flooding in some river catchments (for riverine flooding please visit Web page of CWC).

Action Suggested

- ❖ Check for traffic congestion on your route before leaving for your destination.
- ❖ Follow any traffic advisories that are issued in this regard.
- ❖ Avoid going to areas that face the water logging problems often.
- ❖ Avoid staying in vulnerable structure.

Impact expected and action suggested due to

- ❖ **Heat wave condition** very likely at many/some places over West Rajasthan during 08th-11th with **severe heat wave conditions** at isolated/some parts on 09th June.
- ❖ **Heat wave conditions** are likely to prevail over Jammu-Kashmir-Ladakh-Gilgit-Baltistan-Muzaffarabad during 08th-10th, Punjab, Haryana, Chandigarh & Delhi during 08th-11th; south West Uttar Pradesh during 09th-11th, East Uttar Pradesh, East Rajasthan on 09th & 10th, north Madhya Pradesh on 10th & 11th June.

Yellow alert Areas

- Moderate temperature & heat is tolerable for general public but moderate health concern likely for vulnerable people e.g. infants, elderly, people with chronic diseases.
- Avoid heat exposure.
- Wear lightweight, light colour, loose, cotton clothes.
Cover your head, use a cloth, hat or umbrella

Impact expected and action suggested due to isolated thunderstorm with lightning/gusty & Squally winds over

- ✓ **Thundersquall wind speed reaching 50-60 kmph gusting to 70 kmph** over Interior Karnataka on 12th June. Bihar, Vidarbha on 11th & 12th June.

Impact expected:

- Breaking of tree branches, uprooting of large avenue trees. Large dead limbs blown from trees. Damage to Standing crops.
- Minor to Major damage to banana and papaya trees.
- Minor to major damage to power and communication lines due to breaking of branches.
- Strong wind/hail may damage plantation, horticulture and standing crops.
- Hail may injure people and cattle at open places.
- Partial damage to vulnerable structures due to strong winds.
- Minor damage to kutcha houses/walls and huts.
- Loose objects may fly.

Action suggested:

- People are advised to keep a watch on the weather for worsening conditions and be ready to move to safer places accordingly.
- Stay indoors, close windows & doors and avoid travel if possible.
- Take safe shelters; do not take shelter under trees.
- Do not lie on concrete floors and do not lean against concrete walls.
- Unplug electrical/ electronic appliances.
- Immediately get out of water bodies.
- Keep away from all the objects that conduct electricity.

Agromet advisories for likely impact of Rainfall / Gusty Winds

- Shift the harvested produce in safer places or cover the produce with tarpaulin sheets in the fields. Tie the harvested crops properly and cover them to minimise the risk of displacement due to strong surface winds.
- Provide mechanical support and propping to horticultural crops and staking to vegetables to avoid lodging.
- In **Jammu & Kashmir, Punjab, Haryana, Uttar Pradesh, Rajasthan** and **Madhya Pradesh** apply light and frequent irrigation in the evening to protect standing crops, vegetables and orchards from the adverse effects of heat waves and high temperatures. Undertake mulching with crop residue, straw, polythene or soil to conserve soil moisture.

Livestock / Poultry

- Keep the animals inside the shed during rainfall and provide them balanced feed.
- Store feed and fodder in a safe place to prevent spoilage.
- To reduce the effect of heat wave/high temperature, cover the roof of poultry sheds with grass. Also, provide clean, hygienic and plenty of drinking water to animals.

Legends & abbreviations:

- ❖ **Heavy Rain:**64.5-115.5mm; **Very Heavy Rain:**115.6-204.4mm; **Extremely Heavy Rain:** >204.4mm.
- ❖ **Obsy:** Observatory; Automatic Weather Station; **ARG:** Automatic Rain Gauge; **dist:** District; **NH:** National Highway; **KVK:** Krishi Vigyan Kendra; **DVC:** Damodar Valley Corporation; **PTO:** Part Time Office, **Aero:** Aerodrome, **IAF:** Indian Air Force.
- ❖ **Region wise classification of meteorological Sub-Divisions:**
 - **Northwest India:** Western Himalayan Region (Jammu-Kashmir-Ladakh-Gilgit-Baltistan-Muzaffarabad, Himachal Pradesh and Uttarakhand); Punjab, Haryana-Chandigarh-Delhi; West Uttar Pradesh, East Uttar Pradesh, West Rajasthan and East Rajasthan.
 - **Central India:** West Madhya Pradesh, East Madhya Pradesh, Vidarbha and Chhattisgarh.
 - **East India:** Bihar, Jharkhand, Sub-Himalayan West Bengal & Sikkim; Gangetic West Bengal, Odisha and Andaman & Nicobar Islands.
 - **Northeast India:** Arunachal Pradesh, Assam & Meghalaya and Nagaland, Manipur, Mizoram & Tripura.
 - **West India:** Gujarat Region, Saurashtra & Kutch, Konkan & Goa, Madhya Maharashtra and Marathawada.
 - **South India:** Coastal Andhra Pradesh & Yanam, Telangana, Rayalaseema, Coastal Karnataka, North Interior Karnataka, South Interior Karnataka, Kerala & Mahe, Tamil Nadu, Puducherry & Karaikal and Lakshadweep.

LEGENDS

1. अंडमान और निकोबार द्वीपसमूह

2. अरुणाचल प्रदेश

3. असम और मेघालय

4. नागालैंड, मणिपुर, मिजोरम और त्रिपुरा

5. उप-हिमालयी पश्चिम बंगाल और सिक्किम

6. गंगीय पश्चिम बंगाल

7. ओडिशा

8. झारखंड

9. बिहार

10. पूर्वी उत्तर प्रदेश

11. पश्चिम उत्तर प्रदेश

12. उत्तराखंड

13. हरियाणा, चंडीगढ़ और दिल्ली

14. पंजाब

15. हिमाचल प्रदेश

16. जम्मू और कश्मीर और लद्दाख

17. पश्चिम राजस्थान

18. पूर्वी राजस्थान

19. पश्चिम मध्य प्रदेश

20. पूर्वी मध्य प्रदेश

21. गुजरात

22. सौराष्ट्र

23. कोंकण और गोवा

24. मध्य महाराष्ट्र

25. मराठवाड़ा

26. विदर्भ

27. छत्तीसगढ़

28. तटीय आंध्र प्रदेश और यनम

29. तेलंगाना

30. रायलसीमा

31. तमिलनाडु, पुडुचेरी और कराईकल

32. तटीय कर्नाटक

33. आंतरिक उत्तरी कर्नाटक

34. आंतरिक दक्षिणी कर्नाटक

35. केरल और माहे

36. लक्षद्वीप



1. Andaman & Nicobar Islands

2. Arunachal Pradesh

3. Assam & Meghalaya

4. Nagaland, Manipur, Mizoram & Tripura

5. Sub-Himalayan West Bengal & Sikkim

6. Gangetic West Bengal

7. Odisha

8. Jharkhand

9. Bihar

10. East Uttar Pradesh

11. West Uttar Pradesh

12. Uttarakhand

13. Haryana, Chandigarh & Delhi

14. Punjab

15. Himachal Pradesh

16. Jammu & Kashmir and Ladakh

17. West Rajasthan

18. East Rajasthan

19. West Madhya Pradesh

20. East Madhya Pradesh

21. Gujarat

22. Saurashtra

23. Konkan & Goa

24. Madhya Maharashtra

25. Marathwada

26. Vidarbha

27. Chhattisgarh

28. Coastal Andhra Pradesh & Yanam

29. Telangana

30. Rayalaseema

31. Tamilnadu, Puducherry & Karaikal

32. Coastal Karnataka

33. North Interior Karnataka

34. South Interior Karnataka

35. Kerala & Mahe

36. Lakshadweep

SPATIAL DISTRIBUTION (% of Stations reporting)

% Stations	Category	% Stations	Category
76-100	Widespread (WS/Most Places)	26-50	Scattered (SCT/A Few Places)
51-75	Fairly Widespread (FWS/Many Places)	1-25	Isolated (ISOL)



Fog



Heavy Snow



Cold Wave



Heavy Rain



Dust Storm



Cold Day



Very Heavy Rain



Heat Wave



Ground Frost



Extremely Heavy Rain



Warm Night



Thunder & Lightning



Hot Day



Hailstorm



Hot & Humid



Dust Raising Winds



Strong Surface Winds

COLOUR CODED WARNING

No Warning (No Action)

Watch (Be Aware)

Alert (Be Prepared To Take Action)

Warning (Take Action)

Probabilistic Forecast

Terms	Probability of Occurrence (%)
Unlikely	< 25
Likely	25 - 50
Very Likely	50 - 75
Most Likely	> 75

* Red colour warning does not mean "Red Alert", Red colour warning means "Take Action".

Forecast and Warning for any day is valid from 0830 hours IST of day till 0830 hours IST of next day.

For more details, kindly visit <https://mausam.imd.gov.in> or contact: 011-2434-4599

(Service to the Nation since 1875)

DEFINITION/CRITERIA

Rain/ Snow *

Heavy: 64.5 to 115.5 mm/cm *
Very Heavy: 115.6 to 204.4 mm/cm *
Extremely Heavy: > 204.4 mm/cm *

Heat Wave

When maximum temperature of a station reaches $\geq 40^{\circ}\text{C}$ for plains and $\geq 30^{\circ}\text{C}$ for hilly regions

(a) Based on Departure from normal

Heat Wave: Maximum Temperature Departure from normal 4.5°C to 6.4°C .

Severe Heat Wave: Maximum Temperature Departure from normal $\geq 6.5^{\circ}\text{C}$

(b). Based on Actual maximum temperature

Heat Wave: When actual maximum temperature $\geq 45^{\circ}\text{C}$.

Severe Heat Wave: When actual maximum temperature $\geq 47^{\circ}\text{C}$.

(c). Criteria for heat wave for coastal stations

When maximum temperature departure is $> 4.5^{\circ}\text{C}$ from normal. Heat Wave may be described provided maximum temperature $\geq 37^{\circ}\text{C}$.

Warm Night

When maximum temperature remains 40°C

Warm Night: When minimum temperature departure 4.5°C to 6.4°C .

Severe Warm Night: When minimum temperature departure $> 6.4^{\circ}\text{C}$.

Cold Wave

When minimum temperature of a station $\leq 10^{\circ}\text{C}$ for plains and $\leq 0^{\circ}\text{C}$ for hilly regions.

(a). Based on departure

Cold Wave: Minimum Temperature Departure from normal -4.5°C to -6.4°C .

Severe Cold Wave: Minimum Temperature Departure from normal $\leq -6.5^{\circ}\text{C}$

(b) Based on actual Minimum Temperature (for Plains only)

Cold Wave: When Minimum Temperature is $\leq 4.0^{\circ}\text{C}$

Severe Cold Wave: When Minimum Temperature is $\leq 2.0^{\circ}\text{C}$

(c) For Coastal Stations

When Minimum Temperature departure is $\leq -4.5^{\circ}\text{C}$ & actual Minimum Temperature is $\leq 15^{\circ}\text{C}$

Cold Day

When minimum temperature of a station $\leq 10^{\circ}\text{C}$ for plains and $\leq 0^{\circ}\text{C}$ for hilly regions

Based on departure

Cold Day: Maximum Temperature Departure from normal -4.5°C to -6.4°C .

Severe Cold Day: Maximum Temperature Departure from normal $\leq -6.5^{\circ}\text{C}$

Fog

Phenomenon of small droplets suspended in air and the horizontal visibility $< 1\text{km}$

Moderate Fog: When the visibility between 500-200 metres

Dense Fog: when the visibility between 50- 200 metres

Very Dense Fog: when the visibility < 50 metres

Thunderstorm

Sudden electrical discharges manifested by a flash of light (Lightning) and a sharp rumbling sound (thunder)

Dust/Sand Storm

An ensemble of particles of dust or sand energetically lifted to great heights by a strong and turbulent wind.

Frost

Ice deposits on ground

Air temperature $\leq 4^{\circ}\text{C}$ (over Plains)

Squall

A strong wind that rises suddenly, lasts for atleast 1 minute.

Moderate: Wind speed 52-61 kmph

Severe: Wind speed 62-67 kmph

Very Severe: Wind speed > 67 kmph

Sea State

Effect of various waves in the sea over specific area

Rough to very rough: Wind speed 41-62 kmph (22-33 knots) & Wave height 2.5-6 metre

High to very high: Wind speed 63-117 kmph (34-63 knots) & Wave height 6-14 metre

Phenomenal: Wind speed > 117 kmph (> 63 knots) & Wave height > 14 metre

Cyclone

Cyclonic Storm: Wind speed 62-87 kmph (34-47 knots)

Severe Cyclonic Storm: Wind speed 88-117 kmph (48-63 knots)

Very Severe Cyclonic Storm: Wind speed 118-165 kmph (64 - 89 knots)

Extremely Severe Cyclonic Storm: Wind speed 166-220 kmph (90 -119 knots)

Super Cyclone Storm: Wind speed > 220 kmph (> 119 knots)

* Red colour warning does not mean "Red Alert", Red colour warning means "Take Action".

Forecast and Warning for any day is valid from 0830 hours IST of day till 0830 hours IST of next day.

For more details, kindly visit <https://mausam.imd.gov.in> or contact: 011-2434-4599

(Service to the Nation since 1875)

Hot and Humid: When maximum temperatures remain 3°C above normal along with the above normal relative humidity.